



ELEPHANTS & MOUNT KILIMANJARO

KENYA

Majestic Kenya: Wildlife and Conservation on Safari

14 DAYS | Choose your dates | Best season to travel: **MAY - OCT**

Astride the Equator in East Africa, Kenya is home to a host of natural wonders. On this 14-day expedition, you'll get up close with the wildlife for which Kenya is famous and gain a deeper understanding of its conservation story—past, present, and future. Explore the unique features of the Great Rift Valley while seeking out iconic safari species on game drives, nature walks, and boat rides. Learn about initiatives to protect and rehabilitate endangered elephant and rhino populations, and even witness an elephant feeding. Cultural interactions with local Maasai communities illuminate how land and people intertwine. Your journey is bookended with experiences at Amboseli National Park and Maasai Mara Reserve, offering world-class wildlife viewing on safari — plus an unforgettable stay in an eco-friendly tent camp.

PROGRAM HIGHLIGHTS

- Spend two full days exploring the Maasai Mara Game Reserve, complete with a sunset game drive, a nature walk, and a visit to a local Maasai village.
- Explore Samburu National Reserve on Kenya's remote northern plains to glimpse regional species like gerenuk, Grévy's zebra, reticulated giraffe, and the Beisa oryx.
- Learn about conservation challenges facing endangered wildlife as you visit two pioneering organizations, the David Sheldrick Elephant and Rhino Orphanage and Solio Ranch.
- Observe iconic safari species on game drives in Amboseli National Park, set against the magnificent backdrop of Mount Kilimanjaro on the horizon.

WHAT'S INCLUDED?

- Bilingual local guide
- Driver
- Accommodations
- Activities
- Private transportation
- Meals
- Beverages with meals
- Carbon offsetting





MASAI GIRAFFE BY LISA PALMESE-GRAUBARD

ITINERARY

BLD = BREAKFAST, LUNCH, DINNER

DAY 1 - DEPARTURE

Depart the U.S. on your overnight flight.

DAY 2 - NAIROBI

On arrival into Nairobi, after clearing customs and immigration, you will be met by a representative and transferred to the hotel. Check-in starts at 12 pm. *Overnight at Eka Hotel.*

DAY 3 - AMBOSELI

After breakfast, check out and depart on a four-hour journey to Amboseli National Park, with an orientation en route. With clear skies, Amboseli's backdrop is dominated by the massive volume of Africa's highest peak, Mount Kilimanjaro, in nearby Tanzania. The park's signature view is a herd of wildebeest, zebra, and elephant with the snow-capped volcano towering in the distance. Arrive for lunch and spend the remainder of the day until sunset exploring the park on game drives. The climate here is mild and dry, so comfortably enjoy the spectacular vistas and abundant wildlife on your game drive. Elephants are nearly guaranteed in Amboseli, with lions and cheetahs possible. The park is also home to over 450 bird species and highlights include Common Ostrich, Kori Bustard, Gray-crowned Crane, Saddle-billed and Marabou Storks, African Spoonbill, and Secretarybird. Dinner at the lodge. *Overnight at Amboseli Sopa Lodge. (BLD)*

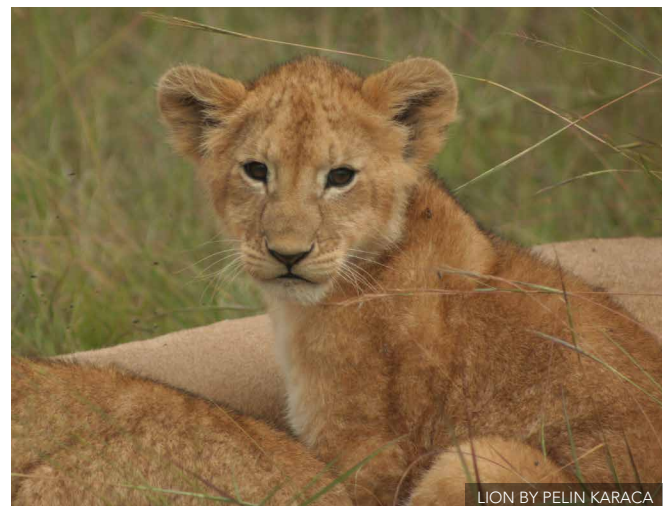
DAY 4 - AMBOSELI

After breakfast, set off with your expert guide in search of more wildlife on game drives in Amboseli National Park. The park encompasses 151 square miles of open savanna, acacia woodland, rocky thorn scrub, and lush wetlands.

Over 80 mammals are found in Amboseli, including African buffalo, impala, eland, spotted hyena, common warthog, Maasai giraffe, Grant's zebra, blue wildebeest, caracal, serval, wild dog, and many more. However, the big tuskers are the main draw to Amboseli, and this park is often called the best place in the world to experience African elephants. Keep your eyes in the skies too for some of the 400-plus species of stunning birds, such as the Lilac-breasted Roller, Malachite Kingfisher, and soaring Bateleur. In the afternoon, learn more about the local culture with a visit to a nearby Maasai village and a nature walk. Dinner at the lodge. *Overnight at Amboseli Sopa Lodge. (BLD)*

DAY 5 - NAIROBI

After breakfast, depart Amboseli National Park and return to Nairobi to spend the morning at a very special and important nonprofit, the Sheldrick Wildlife Trust, visiting their elephant and rhino orphanage near Nairobi. The Orphan's Project rescues wild-born elephants and rhinos that have been separated or abandoned because of poaching,



LION BY PELIN KARACA

droughts, fires, etc. Have lunch at the Karen Blixen Coffee Garden and take a tour of the city with a visit to the famous home of the Danish “Out of Africa” author. Enjoy a guided tour of her home filled with memorabilia from the movie. Later, walk through the old coffee factory and the beautiful gardens with views of the Ngong Hills, where Denys Finch Hatton lays buried. Dinner at the hotel.

Overnight at Eka Hotel. (BLD)

DAY 6 - ABERDARE

After breakfast, drive approximately three hours to Aberdare and have a picnic lunch, followed by an afternoon game drive at Solio Ranch. Solio Ranch is a privately owned wildlife preserve with a focus on black rhino conservation. Black rhinos have experienced dramatic declines over the past few decades; this preserve is an important stronghold for the species and functions as a source population to bolster numbers in other parks throughout Africa. Black and white rhinos are the key attraction for the drive, but other wildlife abounds on this sprawling 17,500-acre preserve. Look for lion, cheetah, leopard, Thomson’s gazelle, waterbuck, and more.

Overnight at Rhino Watch Lodge. (BLD)

DAY 7 - SAMBURU

After breakfast, drive about four hours to Samburu National Reserve, located within the lands of the colorful Samburu people, semi-nomadic pastoralists and relatives of the Maasai. Located in Kenya’s hot and arid northern region, Samburu Reserve offers unique vistas of rounded and rugged hills and undulating plains. The mix of wood and grassland with riverine forest and swamp is home to a wide variety of animal and bird life, including many species that are scarce elsewhere in the country. Specialties include Grevy’s zebra, the reticulated giraffe, Beisa oryx, lesser kudu, the odd-looking gerenuk, Vulturine Guinea fowl, Somali Ostrich, and others. It is also a great place to look for the normally elusive leopard and localized striped hyena. The reserve sits on the north side of the Ewaso Ng’iro River, whose coffee-colored waters and shaded banks are a lifeline for wildlife during the dry season. Arrive for lunch and then head out for an afternoon game drive through the various habitats on the reserve. *Overnight at Samburu Sopa Lodge. (BLD)*

DAY 8 - NYAHURURU

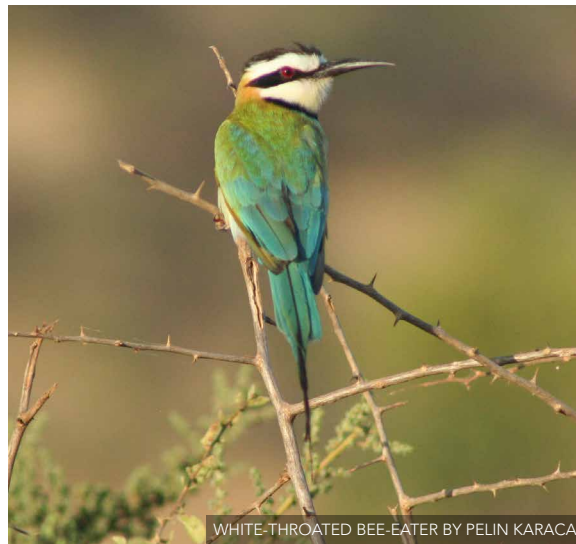
After breakfast, drive southwest to the town of Nyahururu with a picnic en route. Visit the 243-foot Thomson’s Falls (now known as Nyahururu Falls) on the Ewaso Ng’iro river. In 1883, Joseph Thomson, a Scottish geologist and

naturalist, was the first European to discover the falls and named them after his father. View the falls from the top and take the trail to the bottom for a different perspective. While not as diverse as other sites, some spectacular birds occur here including Cinnamon-chested Bee-eater and several types of sunbird. *Overnight at Panari Resort, Nyahururu. (BLD)*

DAY 9 - LAKE NAKURU

After breakfast, drive to Lake Nakuru National Park. Lake Nakuru is a shallow alkaline lake, famous for its enormous legions of pink flamingos once numbering in the millions. While recent conditions have forced most of the flamingos to nest elsewhere in the Rift Valley, the park is still a nature watcher’s paradise with nearly 500 species of bird and great opportunities to see rhino. On your game drive,

expect to see hippo, waterbuck, Bohor reedbuck, Burchell’s zebra, and white rhino, with reasonable chances to spot the rare Rothschild’s giraffe and the beautiful black-and-white colobus monkey. Have lunch at Sarova Lion Hill Lodge, followed by an afternoon game drive through other parts of the park. Search the bushlands for eland, steinbok, Chanler’s mountain reedbuck and dik-dik; rock hyrax and klipspringer occupy the escarpments. Dinner at the lodge. *Overnight at Sentrim Elementaita Lodge. (BLD)*



WHITE-THROATED BEE-EATER BY PELIN KARACA

DAY 10 - LAKE NAIVASHA

After breakfast, drive about two hours to Lake Naivasha. Arrive for lunch, followed by an afternoon boat ride on the lake. Look for Egyptian Goose, various ducks, African Darter, Great White and Pink-backed Pelicans, Goliath Heron, African Fish-Eagle, and basking hippos. *Overnight at Crescent Camp. (BLD)*

DAY 11 - MAASAI MARA

After breakfast, drive about five hours to the Maasai Mara National Reserve, famous for one of world’s most spectacular wildlife migrations, the annual movement of 2.5 wildebeest, zebra, and gazelles to and from the Maasai Mara to the Serengeti in Tanzania. Arrive for lunch, followed by a visit to a local Maasai village for a cultural talk and nature walk. Later in the afternoon, head out for a game drive through the reserve with a reasonable chance of spotting all three big cats—lion, leopard, and cheetah. Dinner in camp. *Overnight at Mara Nyumbu Camp. (BLD)*

DAY 12 - MAASAI MARA

Spend a full day on game drives in Kenya’s flagship park. In addition to the big cats, other mammals plentiful in the

rolling grasslands of the Mara include elephant, giraffe, hippo, buffalo, zebra, wildebeest, topi, Thomson's gazelle, impala, eland, and lesser-known creatures like the bat-eared fox. The park is also home to over 450 bird species; highlights include various bustards, Bare-faced Go-away-bird, Hamerkop, several vultures, Southern Ground-Hornbill, Purple Grenadier, and much more. Return to the camp for delicious sundowner cocktails and dinner.

Overnight at Mara Nyumbu Camp. (BLD)

DAY 13 - DEPARTURE

Enjoy an optional early morning game drive followed by breakfast, and then return to Nairobi for your flight back to the U.S. *Day room at Eka Hotel Day Room. (B)*

DAY 14 - ARRIVE US

Arrive back in the US following your overnight flight.

LAND PRICING

\$4,295 (15 participants + 1 leader)

\$4,425 (10 participants + 1 leader)

Price includes accommodations, meals, entrance fees, and activities as indicated in the itinerary, private transportation unless otherwise noted in itinerary, non-alcoholic beverages with meals, local guides in each region for duration of program, and carbon offset.

International airfare, gratuities, and items of a personal nature are not included.

Valid for travel in 2021.

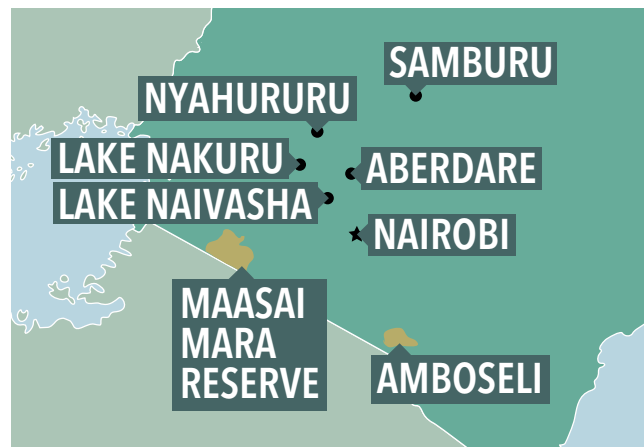
TRAVEL PROTECTION

Holbrook Travel purchases Travel Protection on behalf of all participants. These plans help provide coverage once the trip has departed and offer benefits for Baggage/Personal Effects, Accident & Sickness Medical Expenses, Emergency Evacuation and more. Refer to the Plan Document for more details.

Optional additional coverage is available in the form of the Group Deluxe Plan, which offers benefits for Trip Cancellation/Interruption, in addition to many other insurance benefits and non-insurance assistance services. If interested in this optional plan, we can provide you with rates and plan details.

THE FINE PRINT

A \$200 per person deposit and enrollment form is due to secure your reservation. This deposit is refundable until 95 days prior to departure excluding a \$100 cancellation fee. Non-refundable final payments are due no later than 95 days prior to departure.



This program includes optional carbon offsetting with ClimateSafe. Learn more at holbrooktravel.com/climatesafe

MORE FROM HOLBROOK

Holbrook was founded on the principle that travel fosters a greater understanding of our world's cultural and natural treasures and that these experiences allow individuals to become agents for global change. We hope that your experiences in Kenya will remain with you forever and will challenge you to make a difference in the world we share!

Please join our Facebook page and share photos of your program. Visit us at www.facebook.com/holbrooktravel. We hope to hear from you.



COMMON WARTHOG BY PELIN KARACA



KENYA LANDSCAPE BY ERIC LINDBERG